

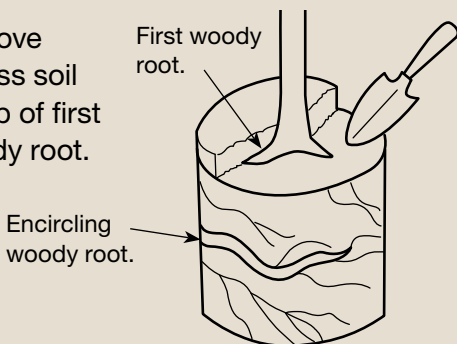


How to Plant a Containerized Tree

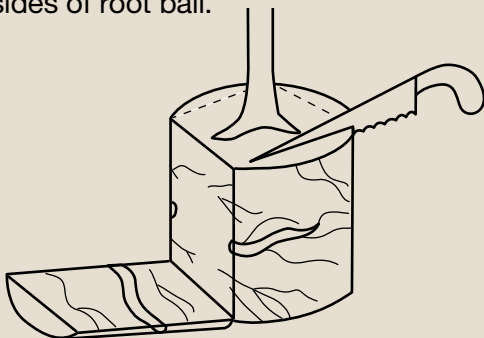
1 Keep root ball moist at all times.
Dry roots die.

2 Remove tree from container by holding trunk with one hand and pushing away or down on container with other hand.

3 Remove excess soil to top of first woody root.



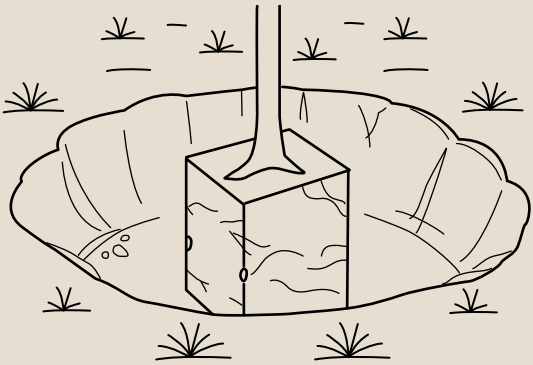
4 If encircling woody roots (pencil size or larger) are found, remove by sawing off sides of root ball.



5 Dig a hole two times the width of root ball and as deep as distance from bottom of root ball to top of first woody root.

Celebrate Arbor Month—plant trees.

- 6** Carefully place tree in hole, making sure it stands straight and top of first woody root is at ground level.

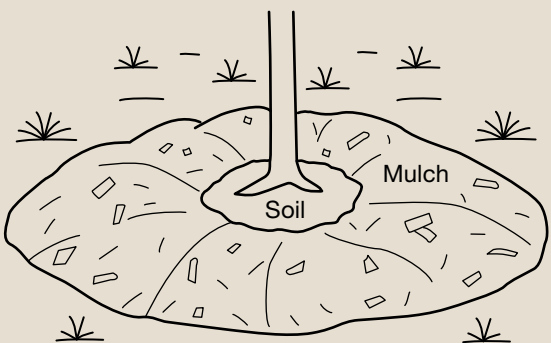


- 7** Backfill hole to top of first woody root.

- 8** Heel in soil with foot over entire backfill area to remove air pockets in the soil.

- 9** Water root ball and entire backfill area.

- 10** Layer 2"-4" of mulch over backfilled area, keeping mulch away from trunk.



Don't create a mulch volcano.

